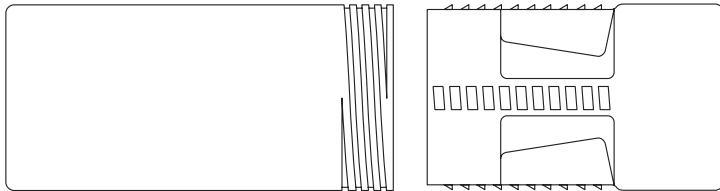


# SK BOXES

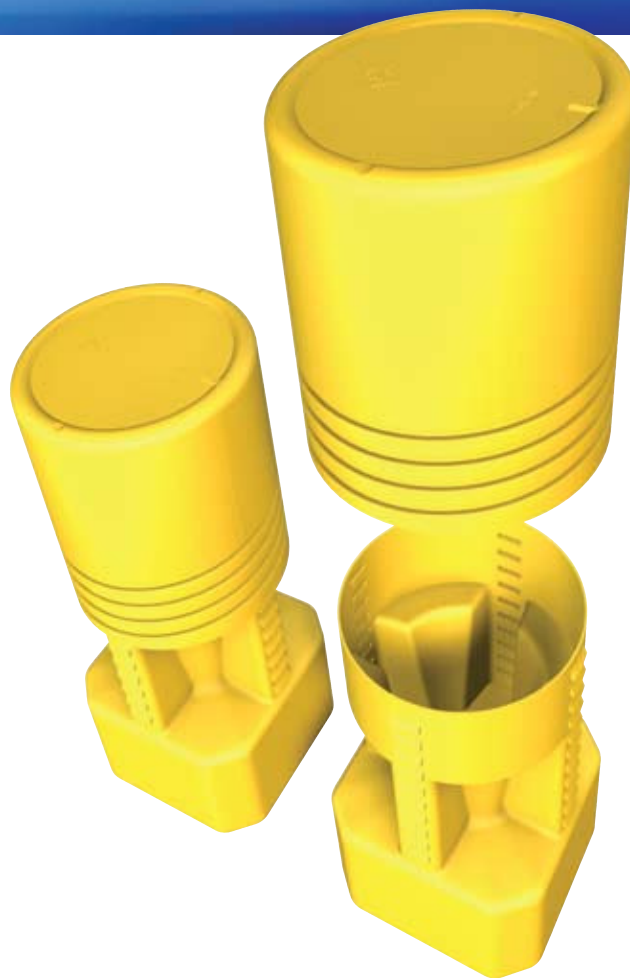


BASE REF NO.	DIAMETER	TOOL LENGTH	MINIMUM QUANTITY
SK40			140
COVER REF NO.			
CPF 65/095	65	42 - 107	*
CPF 65/171	65	108 - 173	*
CPF 65/237	65	174 - 239	*
CPF 65/303	65	240 - 305	*
BASE REF NO.			
SK50			39
COVER REF NO.			
CPF 105/115	105	47 - 115	*
CPF 105/180	105	112 - 180	*
CPF 105/245	105	177 - 245	*
CPF 105/310	105	242 - 310	*

\* Order quantity of covers to equal SK Base order quantity.

## PROTECTIVE END FOAM INSERTS (BLACK LD 45)

BASE REF NO.	DIAMETER	THICKNESS	MINIMUM QUANTITY
FD 50	50	7	250
FD 105	105	7	250



- Custom designed packaging for ISO, BT & DIN tapered tool holders.
- Moulded in durable HDPE.
- Available in single carton quantities.
- Please note bases and outers can be supplied separately in different colours.

**Plastic labels can be supplied plain or pre-printed to your own requirements**



**STANDARD COLOURS:** Red, Green (Light, Medium & Dark), Blue (Light, Medium & Dark), Orange, Yellow (Light & Dark), Black and Natural PE.

**METALLIC COLOURS:** Gold and Silver

**SPECIAL COLOURS:** Can be produced on request.

**PRINTING:** All sizes can be printed to your individual requirements.

**WILLIAM BECKETT**  
PLASTIC PACKAGING