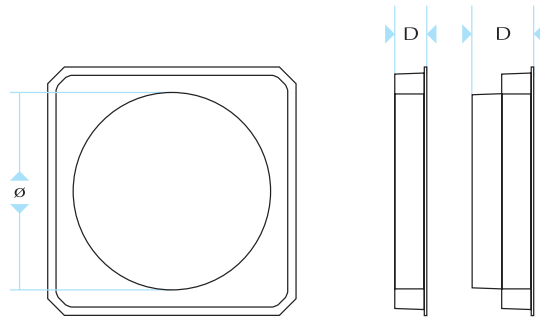
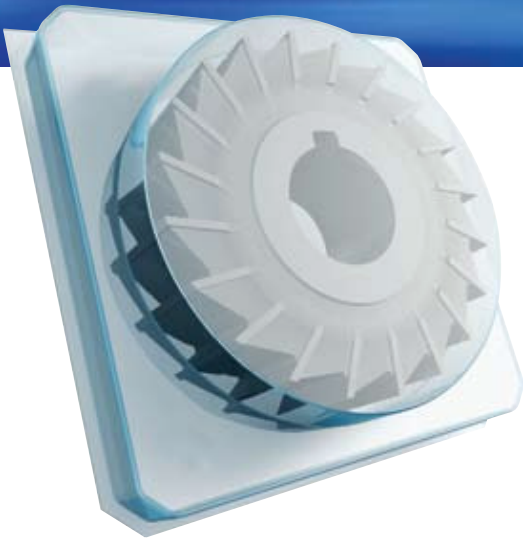
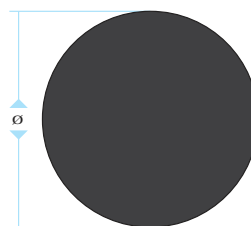


SIDE & FACE MILL BOXES



| BOX REFERENCE NO. | CUTTER DIAMETER - Ø | DEPTH - D | CARTON QUANTITY |
|-------------------|---------------------|-----------|-----------------|
| SF 50/10 | 50 | 10 | 270 |
| SF 50/16 | 50 | 16 | 270 |
| SF 63/12 | 63 | 12 | 235 |
| SF 63/20 | 63 | 20 | 200 |
| SF 80/12 | 80 | 12 | 120 |
| SF 80/25 | 80 | 25 | 100 |
| SF 100/14 | 100 | 14 | 100 |
| SF 100/25 | 100 | 25 | 75 |
| SF 125/14 | 125 | 14 | 105 |
| SF 125/25 | 125 | 25 | 60 |
| SF 160/14 | 160 | 14 | 65 |
| SF 160/20 | 160 | 20 | 65 |
| SF 205/14 | 205 | 14 | 32 |
| SF 205/22 | 205 | 22 | 32 |
| SF 205/32 | 205 | 32 | 30 |

PROTECTIVE SPACERS black foam 3mm and 7mm thick



Foam discs increase protection of high cost cutters.

| PROTECTIVE SPACER REFERENCE NO. | FOAM DIAMETERS | | MINIMUM QUANTITY |
|---------------------------------|----------------|-----------|------------------|
| | DIAMETER Ø | THICKNESS | |
| PS50/3 | 50 | 3 | 250 |
| PS50/7 | 50 | 7 | 250 |
| PS70/3 | 70 | 3 | 250 |
| PS70/7 | 70 | 7 | 250 |
| PS90/3 | 90 | 3 | 250 |
| PS90/7 | 90 | 7 | 250 |
| PS125/3 | 125 | 3 | 250 |
| PS125/7 | 125 | 7 | 250 |
| PS180/3 | 180 | 3 | 250 |
| PS180/7 | 180 | 7 | 250 |

- Custom designed packaging system for side and face mill cutters.
- Maximum visual impact combined with excellent graphics and labelling capabilities.

Labels can be supplied plain or pre-printed to your own requirements

WILLIAM BECKETT
PLASTIC PACKAGING